

K

TWIN IMPELLERS CENTRIFUGAL PUMPS



K 35/40 M

Twin impeller centrifugal pump designed for use in pressurisation units for water supply systems for domestic, civil and industrial use. Suitable for sprinkling irrigation and other water supply applications. Cast iron pump body and motor support. Technopolymer impeller. Stainless steel driving shaft. Carbon/ceramic mechanical seal. Asynchronous, closed motor, cooled by external ventilation. Built-in thermal and current overload protection and a capacitor permanently on in the single-phase version. For the protection of the three-phase motor it is advisable to use a suitable overload protection complying with the regulations in force.

Operating range from 5.3 to 132.1 gpm (1.2 to 30 m³/h) with head up to 318 ft (97 m)

Pumped liquid characteristics clean, free from solids or abrasive substances, non-viscous, non-aggressive, non-crystallised, chemically neutral and close to the characteristics of water

Liquid temperature range from 14°F to +122°F (-10°C to +50°C)

Maximum operating range
K 35/40, K 35/100, K 40/100: **87 psi (6 bar)**
K 45/50: **116 psi (8 bar)**

Maximum ambient temperature +104 F (+40°C)

Protection level IP 44

Terminal board protection level IP 55

Insulation class F



TECHNICAL DATA

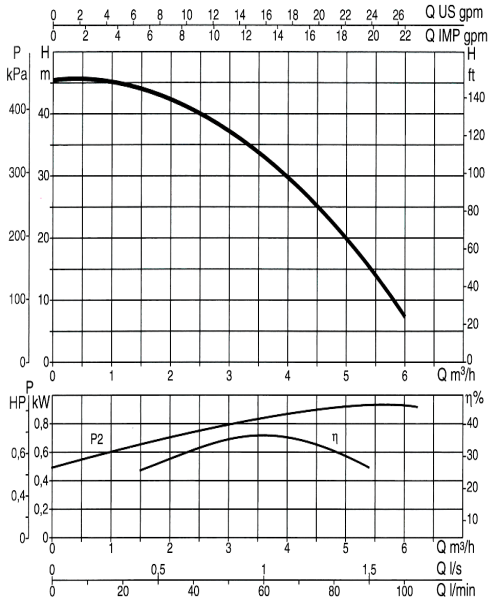
| MODEL | CODE | ELECTRICAL DATA | | | | | | |
|------------|-----------|-----------------|-----------|------------|-----|-----------|-----------|-----|
| | | VOLTAGE 60 Hz | P1 MAX kW | P2 NOMINAL | | In A | CAPACITOR | |
| | | | | kW | HP | | µF | Vc |
| K 35/40 M | TBD | 1x115/230 V~ | 1.3 | 0.75 | 1 | 11.5- 5.5 | 80 | 450 |
| K 45/50 M | 102125620 | 1x220-230 V~ | 2.02 | 1.1 | 1.5 | 9.1- 8.7 | 31.5 | 450 |
| K 35/100 M | 102121670 | 1x220-230 V~ | 1.56 | 1.1 | 1.5 | 7- 6.6 | 31.5 | 450 |
| K 40/100 M | 102125740 | 1x220-230 V~ | 2 | 1.85 | 2.5 | 9.6- 9.2 | 40 | 450 |

K

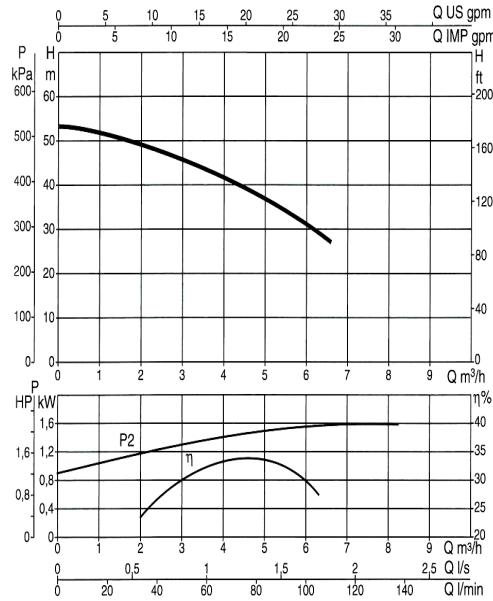
TWIN IMPELLERS CENTRIFUGAL PUMPS

RANGE PERFORMANCE

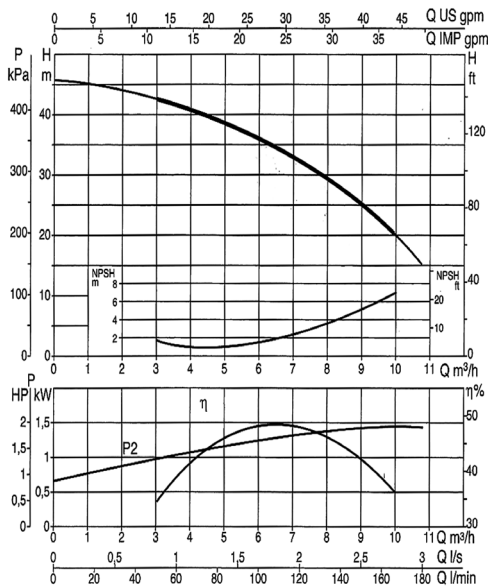
K 35/40



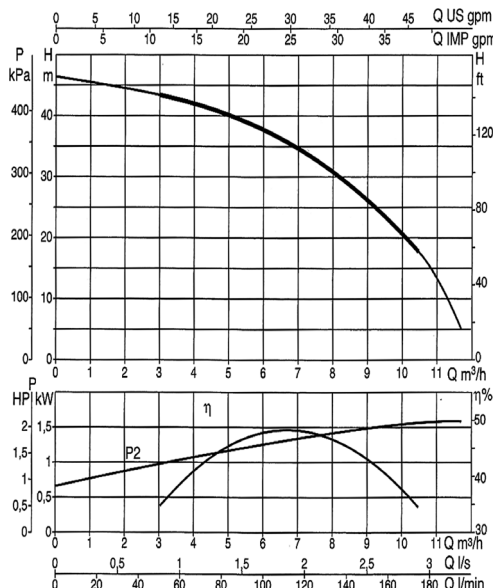
K 45/50



K 35/100



K 40/100



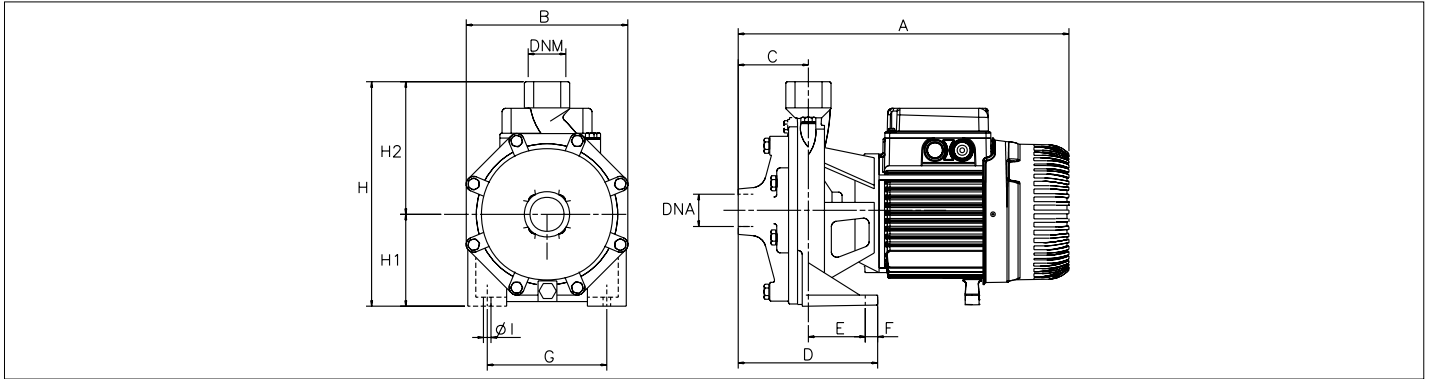
| MODEL | P2 NOMINAL | | Q = gpm | 0 | 1.3 | 2.6 | 4 | 5.3 | 7.9 | 10.6 | 15.8 | 21.1 | 26.4 | 31.7 | 39.6 | 42.2 | 10.5 | 12 | |
|------------|------------|-----|---------|-----------|-----|-----|----|------|------|------|------|------|------|------|------|------|------|------|-----|
| | kW | HP | | Q = l/min | 0 | 5 | 10 | 15 | 20 | 30 | 40 | 60 | 80 | 100 | 120 | 150 | 160 | 180 | 200 |
| K 35/40 M | 0.75 | 1 | H (ft) | 147 | | | | 138 | 133 | 125 | 104 | 73 | 16 | | | | | | |
| | | | H (m) | 44.9 | | | | 42.2 | 40.5 | 38.1 | 31.8 | 22.4 | 5 | | | | | | |
| K 45/50 M | 1.1 | 1.5 | H (ft) | 174 | | | | 167 | 163 | 157 | 140 | 121 | 102 | 59 | | | | | |
| | | | H (m) | 53.1 | | | | 51 | 49.8 | 48 | 42.6 | 37 | 31 | 17.9 | | | | | |
| K 35/100 M | 1.1 | 1.5 | H (ft) | 123 | | | | | | 118 | 113 | 105 | 95 | 81 | 54 | 44 | 13.1 | | |
| | | | H (m) | 37.4 | | | | | | 36 | 34.5 | 32 | 29 | 24.6 | 16.6 | 13.5 | 4.0 | | |
| K 40/100 M | 1.85 | 2.5 | H (ft) | 150 | | | | | | 148 | 144 | 136 | 128 | 116 | 93 | 82 | 18.1 | 15.1 | |
| | | | H (m) | 45.7 | | | | | | 45 | 43.8 | 41.5 | 39 | 35.3 | 28.3 | 25 | 18.1 | 4.6 | |

K

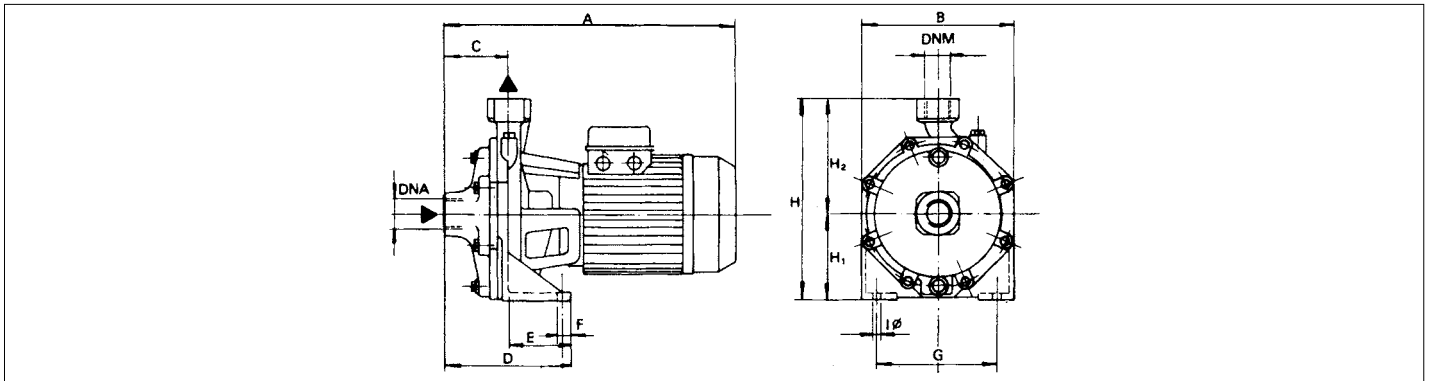
TWIN IMPELLERS CENTRIFUGAL PUMPS

DIMENSIONS AND WEIGHTS

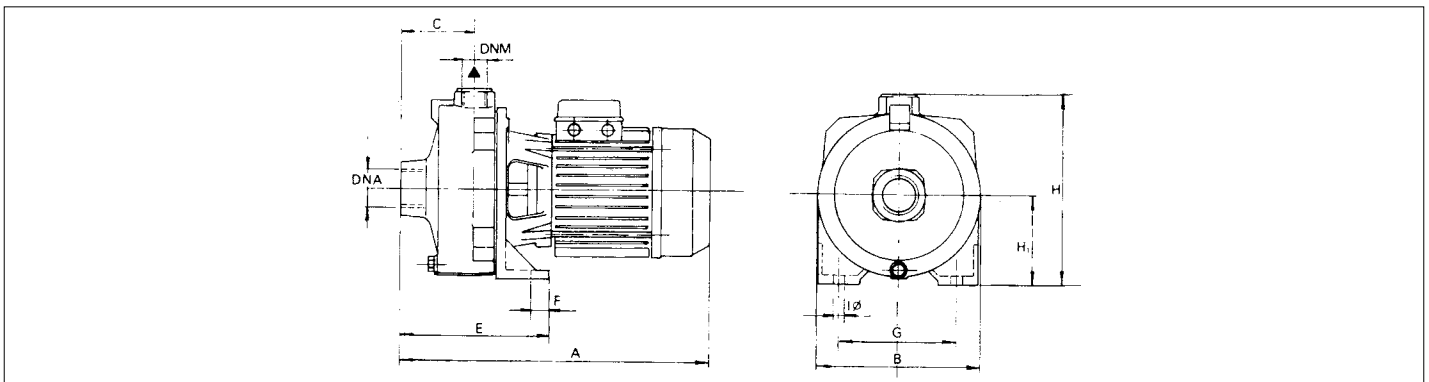
K 35/40



K 45/50



K 35/100



| MODEL | units | A | B | C | D | E | F | G | I Ø | H | H1 | H2 | DNA NPT | DNM NPT | PACKAGING DIMENSIONS | | | VOLUME | WEIGHT | Q.TY x PALLET |
|------------|--------|------|------|-----|-----|-----|-----|-----|------|------|-----|-----|---------|---------|----------------------|-----|------|----------|----------|---------------|
| | | | | | | | | | | | | | | | L/A | L/B | H | | | |
| K 35/40 M | inches | 14.3 | 8.5 | 3 | 5.8 | 2.8 | 0.6 | 5.8 | 0.4 | 9.3 | 3.9 | 5.3 | 1" | 1" | 15.4 | 9.1 | 14.3 | 0.8 ft³ | 35.9 lbs | 27 |
| | mm | 363 | 217 | 76 | 148 | 72 | 15 | 148 | 9.5 | 235 | 100 | 135 | | | 392 | 232 | 362 | 0.024 m³ | 16.3 kg | |
| K 45/50 M | inches | 14.6 | 12.2 | 3 | 5.7 | 2.7 | 0.6 | 6.5 | 0.5 | 10.6 | 4.6 | 5.9 | 1 1/4" | 1" | 16.8 | 9.7 | 11.7 | 1.1 ft³ | 51.4 lbs | 21 |
| | mm | 370 | 310 | 75 | 144 | 69 | 15 | 165 | 11.5 | 268 | 118 | 150 | | | 427 | 246 | 297 | 0.031 m³ | 23.3 kg | |
| K 35/100 M | inches | 15.2 | 8.1 | 3.5 | - | 7 | 0.8 | 5.7 | 0.4 | 9.2 | 4.3 | 4.9 | 1 1/2" | 1" | 16.8 | 9.7 | 11.7 | 1.1 ft³ | 47.4 lbs | 21 |
| | mm | 387 | 205 | 88 | - | 179 | 20 | 145 | 11 | 233 | 108 | 125 | | | 427 | 246 | 297 | 0.031 m³ | 21.5 kg | |
| K 40/100 M | inches | 18.1 | 8.1 | 3.5 | - | 7 | 0.8 | 5.7 | 0.4 | 9.2 | 4.3 | 4.9 | 1 1/2" | 1" | 20.6 | 9.7 | 11.7 | 1.1 ft³ | 50.7 lbs | 18 |
| | mm | 461 | 205 | 88 | - | 179 | 20 | 145 | 11 | 233 | 108 | 125 | | | 522 | 246 | 297 | 0.031 m³ | 23.0 kg | |